



FreeExams.co.ke

**UNIVERSITY EXAMINATIONS
2022/2023 ACADEMIC YEAR**

THIRD YEAR SECOND SEMESTER

SPECIAL/SUPPLEMENTARY EXAMINATION

**FOR THE DEGREES OF BACHELOR OF SCIENCE IN BIOLOGY AND BACHELOR
OF EDUCATION SCIENCE.**

**COURSE CODE: SBL 321.
COURSE TITLE: BIostatISTICS**

DATE: 23RD AUGUST 2023

TIME: 2.00 - 4.00 PM

INSTRUCTIONS TO CANDIDATES

Answer Question one (1) and any other two (2) Questions. Question one is compulsory and carries 30 marks, the other Questions carry 20 marks each.

TIME: 2 Hours

QUESTION ONE

a. A microbiologist obtained the following zones of inhibition in an experiment testing the efficacy of a medicinal plant. 180, 86, 99, 170, 122, 120. Calculate:

- i. Mean (1.5 Marks).
- ii. Standard deviation (2 Marks).
- iii. Variance (1.5 Marks).
- iv. Standard error (1.5 Marks).
- v. Coefficient of variation (1.5 Marks).

b. Distinguish the following (2 Marks).

- i. Confounding variable
- ii. Mediator variable

c. How much of the area is found beyond a z-score of 3.24? (4 Marks).

d. Zack obtained a score of 60 in a Chemistry test. He then obtained a score of 540 in a zoology aptitude test. Given the data below, is Chemistry or Zoology Zack's strength? (5 Marks).

Test	μ	SD
Zoology aptitude test	500	10
Chemistry test	70	10

e. A medicine man claims that a combination of any of 6 of his 9 herbs can cure Covid-19. In how many ways can he combine the herbs? (2 Marks).

f. In a study on the distribution of tree-roosting birds, if there are 300 birds randomly distributed on 400 trees, find the probability that a given tree contains exactly four birds. (4 Marks).

g. The data below represents the blood groups of 40 students in a Biostatistics class. Construct a frequency distribution for the data. (3 Marks).

A AB B O O A B AB A B
 O O O A AB B B A O AB
 A O O A AB B B A A B
 AB A O B AB O A B A B

h. What is the purpose of fitting a Poisson distribution to numbers? (2 Marks).

QUESTION TWO

A study was conducted in seven departments at Kibabii University to determine the number of students who originated from private schools in 2020 and in 2023. Form a null hypothesis and determine whether the rise in numbers is significant. (20 Marks).

2020	3	4	10	7	8	2	11
2023	200	198	140	150	600	98	40

QUESTION THREE

Discuss four levels of measurement scales and the variables in statistics

(20 Marks).

QUESTION FOUR

- a. Two plant extracts are claimed to be effective in curing stomach ulcer were tested on patients. The patients' reactions to treatment were recorded in the table below:

EXTRACTS	EFFICACY		
	CURED	HARMED	NO EFFECT
<i>Schinus molle</i>	620	840	240
<i>Opuntia opposita</i>	340	440	220

Test the data to determine whether the two extracts have the same effects.

(10 Marks).

- b. The table below is an outcome of a survey of Kibabii University graduates working in Bungoma county. They were divided into four groups on the basis of their classes of degree and their income in practice, ten years after graduation.

Class of degree	Income		
	High	Medium	Low
First	22	10	10
Second	10	13	7
Third	20	6	6
Pass	5	9	15

Determine the relationship between the class of degree and their income.

(10 Marks).

QUESTION FIVE

A sample of 158 obese boys of average age 15 was analyzed with respect to various physical characteristics during early childhood. A control group of 94 non-obese boys of similar age and socioeconomic background was also analyzed. The following table gives the sample means and standard deviations for two characteristics of the two groups.

	Obese group	Non obese group
Birth weight	$x_1 = 7.04, S_1 = 1.2$	$x_2 = 7.19, S_2 = 0.9$
One year weight	$x_1 = 23.3, S_1 = 2.8$	$x_2 = 21.9, S_2 = 3.0$

- (a) Use the data to test the null hypothesis: $H_0: \mu_1 = \mu_2$, at $\alpha = 0.05$ for

- Birth weight
- One-year weight

(7 Marks).

(7 Marks).

- (b) What conclusions can be drawn from the results in (a) i and ii above?

(6 Marks).

STATISTICAL TABLES

Cumulative normal distribution

Critical values of the t distribution

Critical values of the F distribution

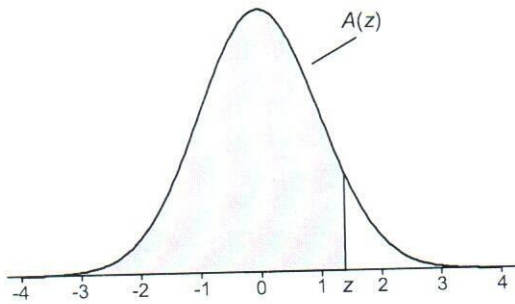
Critical values of the chi-squared distribution

Critical Values of Man-Whitney U

TABLE A.1

Cumulative Standardized Normal Distribution

$A(z)$ is the integral of the standardized normal distribution from $-\infty$ to z (in other words, the area under the curve to the left of z). It gives the probability of a normal random variable not being more than z standard deviations above its mean. Values of z of particular importance:



z	$A(z)$	
1.645	0.9500	Lower limit of right 5% tail
1.960	0.9750	Lower limit of right 2.5% tail
2.326	0.9900	Lower limit of right 1% tail
2.576	0.9950	Lower limit of right 0.5% tail
3.090	0.9990	Lower limit of right 0.1% tail
3.291	0.9995	Lower limit of right 0.05% tail

z	0.00	0.01	0.02	0.03	0.04	0.05	0.06	0.07	0.08	0.09
0.0	0.5000	0.5040	0.5080	0.5120	0.5160	0.5199	0.5239	0.5279	0.5319	0.5359
0.1	0.5398	0.5438	0.5478	0.5517	0.5557	0.5596	0.5636	0.5675	0.5714	0.5753
0.2	0.5793	0.5832	0.5871	0.5910	0.5948	0.5987	0.6026	0.6064	0.6103	0.6141
0.3	0.6179	0.6217	0.6255	0.6293	0.6331	0.6368	0.6406	0.6443	0.6480	0.6517
0.4	0.6554	0.6591	0.6628	0.6664	0.6700	0.6736	0.6772	0.6808	0.6844	0.6879
0.5	0.6915	0.6950	0.6985	0.7019	0.7054	0.7088	0.7123	0.7157	0.7190	0.7224
0.6	0.7257	0.7291	0.7324	0.7357	0.7389	0.7422	0.7454	0.7486	0.7517	0.7549
0.7	0.7580	0.7611	0.7642	0.7673	0.7704	0.7734	0.7764	0.7794	0.7823	0.7852
0.8	0.7881	0.7910	0.7939	0.7967	0.7995	0.8023	0.8051	0.8078	0.8106	0.8133
0.9	0.8159	0.8186	0.8212	0.8238	0.8264	0.8289	0.8315	0.8340	0.8365	0.8389
1.0	0.8413	0.8438	0.8461	0.8485	0.8508	0.8531	0.8554	0.8577	0.8599	0.8621
1.1	0.8643	0.8665	0.8686	0.8708	0.8729	0.8749	0.8770	0.8790	0.8810	0.8830
1.2	0.8849	0.8869	0.8888	0.8907	0.8925	0.8944	0.8962	0.8980	0.8997	0.9015
1.3	0.9032	0.9049	0.9066	0.9082	0.9099	0.9115	0.9131	0.9147	0.9162	0.9177
1.4	0.9192	0.9207	0.9222	0.9236	0.9251	0.9265	0.9279	0.9292	0.9306	0.9319
1.5	0.9332	0.9345	0.9357	0.9370	0.9382	0.9394	0.9406	0.9418	0.9429	0.9441
1.6	0.9452	0.9463	0.9474	0.9484	0.9495	0.9505	0.9515	0.9525	0.9535	0.9545
1.7	0.9554	0.9564	0.9573	0.9582	0.9591	0.9599	0.9608	0.9616	0.9625	0.9633
1.8	0.9641	0.9649	0.9656	0.9664	0.9671	0.9678	0.9686	0.9693	0.9699	0.9706
1.9	0.9713	0.9719	0.9726	0.9732	0.9738	0.9744	0.9750	0.9756	0.9761	0.9767
2.0	0.9772	0.9778	0.9783	0.9788	0.9793	0.9798	0.9803	0.9808	0.9812	0.9817
2.1	0.9821	0.9826	0.9830	0.9834	0.9838	0.9842	0.9846	0.9850	0.9854	0.9857
2.2	0.9861	0.9864	0.9868	0.9871	0.9875	0.9878	0.9881	0.9884	0.9887	0.9890
2.3	0.9893	0.9896	0.9898	0.9901	0.9904	0.9906	0.9909	0.9911	0.9913	0.9916
2.4	0.9918	0.9920	0.9922	0.9925	0.9927	0.9929	0.9931	0.9932	0.9934	0.9936
2.5	0.9938	0.9940	0.9941	0.9943	0.9945	0.9946	0.9948	0.9949	0.9951	0.9952
2.6	0.9953	0.9955	0.9956	0.9957	0.9959	0.9960	0.9961	0.9962	0.9963	0.9964
2.7	0.9965	0.9966	0.9967	0.9968	0.9969	0.9970	0.9971	0.9972	0.9973	0.9974
2.8	0.9974	0.9975	0.9976	0.9977	0.9977	0.9978	0.9979	0.9979	0.9980	0.9981
2.9	0.9981	0.9982	0.9982	0.9983	0.9984	0.9984	0.9985	0.9985	0.9986	0.9986
3.0	0.9987	0.9987	0.9987	0.9988	0.9988	0.9989	0.9989	0.9989	0.9990	0.9990
3.1	0.9990	0.9991	0.9991	0.9991	0.9992	0.9992	0.9992	0.9992	0.9993	0.9993
3.2	0.9993	0.9993	0.9994	0.9994	0.9994	0.9994	0.9994	0.9995	0.9995	0.9995
3.3	0.9995	0.9995	0.9995	0.9996	0.9996	0.9996	0.9996	0.9996	0.9996	0.9997
3.4	0.9997	0.9997	0.9997	0.9997	0.9997	0.9997	0.9997	0.9997	0.9997	0.9998
3.5	0.9998	0.9998	0.9998	0.9998	0.9998	0.9998	0.9998	0.9998	0.9998	0.9998
3.6	0.9998	0.9998	0.9999							

Z	.00	.01	.02	.03	.04	.05	.06	.07	.08	.09
-3.9	.00005	.00005	.00004	.00004	.00004	.00004	.00004	.00004	.00003	.00003
-3.8	.00007	.00007	.00007	.00006	.00006	.00006	.00006	.00005	.00005	.00005
-3.7	.00011	.00010	.00010	.00010	.00009	.00009	.00008	.00008	.00008	.00008
-3.6	.00016	.00015	.00015	.00014	.00014	.00013	.00013	.00012	.00012	.00011
-3.5	.00023	.00022	.00022	.00021	.00020	.00019	.00019	.00018	.00017	.00017
-3.4	.00034	.00032	.00031	.00030	.00029	.00028	.00027	.00026	.00025	.00024
-3.3	.00048	.00047	.00045	.00043	.00042	.00040	.00039	.00038	.00036	.00035
-3.2	.00069	.00066	.00064	.00062	.00060	.00058	.00056	.00054	.00052	.00050
-3.1	.00097	.00094	.00090	.00087	.00084	.00082	.00079	.00076	.00074	.00071
-3.0	.00135	.00131	.00126	.00122	.00118	.00114	.00111	.00107	.00104	.00100
-2.9	.00187	.00181	.00175	.00169	.00164	.00159	.00154	.00149	.00144	.00139
-2.8	.00256	.00248	.00240	.00233	.00226	.00219	.00212	.00205	.00199	.00193
-2.7	.00347	.00336	.00326	.00317	.00307	.00298	.00289	.00280	.00272	.00264
-2.6	.00466	.00453	.00440	.00427	.00415	.00402	.00391	.00379	.00368	.00357
-2.5	.00621	.00604	.00587	.00570	.00554	.00539	.00523	.00508	.00494	.00480
-2.4	.00820	.00798	.00776	.00755	.00734	.00714	.00695	.00676	.00657	.00639
-2.3	.01072	.01044	.01017	.00990	.00964	.00939	.00914	.00889	.00866	.00842
-2.2	.01390	.01355	.01321	.01287	.01255	.01222	.01191	.01160	.01130	.01101
-2.1	.01786	.01743	.01700	.01659	.01618	.01578	.01539	.01500	.01463	.01426
-2.0	.02275	.02222	.02169	.02118	.02068	.02018	.01970	.01923	.01876	.01831
-1.9	.02872	.02807	.02743	.02680	.02619	.02559	.02500	.02442	.02385	.02330
-1.8	.03593	.03515	.03438	.03362	.03288	.03216	.03144	.03074	.03005	.02938
-1.7	.04457	.04363	.04272	.04182	.04093	.04006	.03920	.03836	.03754	.03673
-1.6	.05480	.05370	.05262	.05155	.05050	.04947	.04846	.04746	.04648	.04551
-1.5	.06681	.06552	.06426	.06301	.06178	.06057	.05938	.05821	.05705	.05592
-1.4	.08076	.07927	.07780	.07636	.07493	.07353	.07215	.07078	.06944	.06811
-1.3	.09680	.09510	.09342	.09176	.09012	.08851	.08691	.08534	.08379	.08226
-1.2	.11507	.11314	.11123	.10935	.10749	.10565	.10383	.10204	.10027	.09853
-1.1	.13567	.13350	.13136	.12924	.12714	.12507	.12302	.12100	.11900	.11702
-1.0	.15866	.15625	.15386	.15151	.14917	.14686	.14457	.14231	.14007	.13786
-0.9	.18406	.18141	.17879	.17619	.17361	.17106	.16853	.16602	.16354	.16109
-0.8	.21186	.20897	.20611	.20327	.20045	.19766	.19489	.19215	.18943	.18673
-0.7	.24196	.23885	.23576	.23270	.22965	.22663	.22363	.22065	.21770	.21476
-0.6	.27425	.27093	.26763	.26435	.26109	.25785	.25463	.25143	.24825	.24510
-0.5	.30854	.30503	.30153	.29806	.29460	.29116	.28774	.28434	.28096	.27760
-0.4	.34458	.34090	.33724	.33360	.32997	.32636	.32276	.31918	.31561	.31207
-0.3	.38209	.37828	.37448	.37070	.36693	.36317	.35942	.35569	.35197	.34827
-0.2	.42074	.41683	.41294	.40905	.40517	.40129	.39743	.39358	.38974	.38591
-0.1	.46017	.45620	.45224	.44828	.44433	.44038	.43644	.43251	.42858	.42465
-0.0	.50000	.49601	.49202	.48803	.48405	.48006	.47608	.47210	.46812	.46414

TABLE A.2

t Distribution: Critical Values of t

Degrees of freedom	Two-tailed test: One-tailed test:	Significance level					
		10% 5%	5% 2.5%	2% 1%	1% 0.5%	0.2% 0.1%	0.1% 0.05%
1		6.314	12.706	31.821	63.657	318.309	636.619
2		2.920	4.303	6.965	9.925	22.327	31.599
3		2.353	3.182	4.541	5.841	10.215	12.924
4		2.132	2.776	3.747	4.604	7.173	8.610
5		2.015	2.571	3.365	4.032	5.893	6.869
6		1.943	2.447	3.143	3.707	5.208	5.959
7		1.894	2.365	2.998	3.499	4.785	5.408
8		1.860	2.306	2.896	3.355	4.501	5.041
9		1.833	2.262	2.821	3.250	4.297	4.781
10		1.812	2.228	2.764	3.169	4.144	4.587
11		1.796	2.201	2.718	3.106	4.025	4.437
12		1.782	2.179	2.681	3.055	3.930	4.318
13		1.771	2.160	2.650	3.012	3.852	4.221
14		1.761	2.145	2.624	2.977	3.787	4.140
15		1.753	2.131	2.602	2.947	3.733	4.073
16		1.746	2.120	2.583	2.921	3.686	4.015
17		1.740	2.110	2.567	2.898	3.646	3.965
18		1.734	2.101	2.552	2.878	3.610	3.922
19		1.729	2.093	2.539	2.861	3.579	3.883
20		1.725	2.086	2.528	2.845	3.552	3.850
21		1.721	2.080	2.518	2.831	3.527	3.819
22		1.717	2.074	2.508	2.819	3.505	3.792
23		1.714	2.069	2.500	2.807	3.485	3.768
24		1.711	2.064	2.492	2.797	3.467	3.745
25		1.708	2.060	2.485	2.787	3.450	3.725
26		1.706	2.056	2.479	2.779	3.435	3.707
27		1.703	2.052	2.473	2.771	3.421	3.690
28		1.701	2.048	2.467	2.763	3.408	3.674
29		1.699	2.045	2.462	2.756	3.396	3.659
30		1.697	2.042	2.457	2.750	3.385	3.646
32		1.694	2.037	2.449	2.738	3.365	3.622
34		1.691	2.032	2.441	2.728	3.348	3.601
36		1.688	2.028	2.434	2.719	3.333	3.582
38		1.686	2.024	2.429	2.712	3.319	3.566
40		1.684	2.021	2.423	2.704	3.307	3.551
42		1.682	2.018	2.418	2.698	3.296	3.538
44		1.680	2.015	2.414	2.692	3.286	3.526
46		1.679	2.013	2.410	2.687	3.277	3.515
48		1.677	2.011	2.407	2.682	3.269	3.505
50		1.676	2.009	2.403	2.678	3.261	3.496
60		1.671	2.000	2.390	2.660	3.232	3.460
70		1.667	1.994	2.381	2.648	3.211	3.435
80		1.664	1.990	2.374	2.639	3.195	3.416
90		1.662	1.987	2.368	2.632	3.183	3.402
100		1.660	1.984	2.364	2.626	3.174	3.390
120		1.658	1.980	2.358	2.617	3.160	3.373
150		1.655	1.976	2.351	2.609	3.145	3.357
200		1.653	1.972	2.345	2.601	3.131	3.340
300		1.650	1.968	2.339	2.592	3.118	3.323
400		1.649	1.966	2.336	2.588	3.111	3.315
500		1.648	1.965	2.334	2.586	3.107	3.310
600		1.647	1.964	2.333	2.584	3.104	3.307
∞		1.645	1.960	2.326	2.576	3.090	3.291

TABLE A.3

F Distribution: Critical Values of F (5% significance level)

ν_1	1	2	3	4	5	6	7	8	9	10	12	14	16	18	20
ν_2															
1	161.45	199.50	215.71	224.58	230.16	233.99	236.77	238.88	240.54	241.88	243.91	245.36	246.46	247.32	248.01
2	18.51	19.00	19.16	19.25	19.30	19.33	19.35	19.37	19.38	19.40	19.41	19.42	19.43	19.44	19.45
3	10.13	9.55	9.28	9.12	9.01	8.94	8.89	8.85	8.81	8.79	8.74	8.71	8.69	8.67	8.66
4	7.71	6.94	6.59	6.39	6.26	6.16	6.09	6.04	6.00	5.96	5.91	5.87	5.84	5.82	5.80
5	6.61	5.79	5.41	5.19	5.05	4.95	4.88	4.82	4.77	4.74	4.68	4.64	4.60	4.58	4.56
6	5.99	5.14	4.76	4.53	4.39	4.28	4.21	4.15	4.10	4.06	4.00	3.96	3.92	3.90	3.87
7	5.59	4.74	4.35	4.12	3.97	3.87	3.79	3.73	3.68	3.64	3.57	3.53	3.49	3.47	3.44
8	5.32	4.46	4.07	3.84	3.69	3.58	3.50	3.44	3.39	3.35	3.28	3.24	3.20	3.17	3.15
9	5.12	4.26	3.86	3.63	3.48	3.37	3.29	3.23	3.18	3.14	3.07	3.03	2.99	2.96	2.94
10	4.96	4.10	3.71	3.48	3.33	3.22	3.14	3.07	3.02	2.98	2.91	2.86	2.83	2.80	2.77
11	4.84	3.98	3.59	3.36	3.20	3.09	3.01	2.95	2.90	2.85	2.79	2.74	2.70	2.67	2.65
12	4.75	3.89	3.49	3.26	3.11	3.00	2.91	2.85	2.80	2.75	2.69	2.64	2.60	2.57	2.54
13	4.67	3.81	3.41	3.18	3.03	2.92	2.83	2.77	2.71	2.67	2.60	2.55	2.51	2.48	2.46
14	4.60	3.74	3.34	3.11	2.96	2.85	2.76	2.70	2.65	2.60	2.53	2.48	2.44	2.41	2.39
15	4.54	3.68	3.29	3.06	2.90	2.79	2.71	2.64	2.59	2.54	2.48	2.42	2.38	2.35	2.33
16	4.49	3.63	3.24	3.01	2.85	2.74	2.66	2.59	2.54	2.49	2.42	2.37	2.33	2.30	2.28
17	4.45	3.59	3.20	2.96	2.81	2.70	2.61	2.55	2.49	2.45	2.38	2.33	2.29	2.26	2.23
18	4.41	3.55	3.16	2.93	2.77	2.66	2.58	2.51	2.46	2.41	2.34	2.29	2.25	2.22	2.19
19	4.38	3.52	3.13	2.90	2.74	2.63	2.54	2.48	2.42	2.38	2.31	2.26	2.21	2.18	2.16
20	4.35	3.49	3.10	2.87	2.71	2.60	2.51	2.45	2.39	2.35	2.28	2.22	2.18	2.15	2.12
21	4.32	3.47	3.07	2.84	2.68	2.57	2.49	2.42	2.37	2.32	2.25	2.20	2.16	2.12	2.10
22	4.30	3.44	3.05	2.82	2.66	2.55	2.46	2.40	2.34	2.30	2.23	2.17	2.13	2.10	2.07
23	4.28	3.42	3.03	2.80	2.64	2.53	2.44	2.37	2.32	2.27	2.20	2.15	2.11	2.08	2.05
24	4.26	3.40	3.01	2.78	2.62	2.51	2.42	2.36	2.30	2.25	2.18	2.13	2.09	2.05	2.03
25	4.24	3.39	2.99	2.76	2.60	2.49	2.40	2.34	2.28	2.24	2.16	2.11	2.07	2.04	2.01
26	4.22	3.37	2.98	2.74	2.59	2.47	2.39	2.32	2.27	2.22	2.15	2.09	2.05	2.02	1.99
27	4.21	3.35	2.96	2.73	2.57	2.46	2.37	2.31	2.25	2.20	2.13	2.08	2.04	2.00	1.97
28	4.20	3.34	2.95	2.71	2.56	2.45	2.36	2.29	2.24	2.19	2.12	2.06	2.02	1.99	1.96
29	4.18	3.33	2.93	2.70	2.55	2.43	2.35	2.28	2.22	2.18	2.10	2.05	2.01	1.97	1.94
30	4.17	3.32	2.92	2.69	2.53	2.42	2.33	2.27	2.21	2.16	2.09	2.04	1.99	1.96	1.93
35	4.12	3.27	2.87	2.64	2.49	2.37	2.29	2.22	2.16	2.11	2.04	1.99	1.94	1.91	1.88
40	4.08	3.23	2.84	2.61	2.45	2.34	2.25	2.18	2.12	2.08	2.00	1.95	1.90	1.87	1.84
50	4.03	3.18	2.79	2.56	2.40	2.29	2.20	2.13	2.07	2.03	1.95	1.89	1.85	1.81	1.78
60	4.00	3.15	2.76	2.53	2.37	2.25	2.17	2.10	2.04	1.99	1.92	1.86	1.82	1.78	1.75
70	3.98	3.13	2.74	2.50	2.35	2.23	2.14	2.07	2.02	1.97	1.89	1.84	1.79	1.75	1.72
80	3.96	3.11	2.72	2.49	2.33	2.21	2.13	2.06	2.00	1.95	1.88	1.82	1.77	1.73	1.70
90	3.95	3.10	2.71	2.47	2.32	2.20	2.11	2.04	1.99	1.94	1.86	1.80	1.76	1.72	1.69
100	3.94	3.09	2.70	2.46	2.31	2.19	2.10	2.03	1.97	1.93	1.85	1.79	1.75	1.71	1.68
120	3.92	3.07	2.68	2.45	2.29	2.18	2.09	2.02	1.96	1.91	1.83	1.78	1.73	1.69	1.66
150	3.90	3.06	2.66	2.43	2.27	2.16	2.07	2.00	1.94	1.89	1.82	1.76	1.71	1.67	1.64
200	3.89	3.04	2.65	2.42	2.26	2.14	2.05	1.98	1.93	1.88	1.80	1.74	1.69	1.66	1.62
250	3.88	3.03	2.64	2.41	2.25	2.13	2.05	1.98	1.92	1.87	1.79	1.73	1.68	1.65	1.61
300	3.87	3.03	2.63	2.40	2.24	2.13	2.04	1.97	1.91	1.86	1.78	1.72	1.68	1.64	1.61
400	3.86	3.02	2.63	2.39	2.24	2.12	2.03	1.96	1.90	1.85	1.78	1.72	1.67	1.63	1.60
500	3.86	3.01	2.62	2.39	2.23	2.12	2.03	1.96	1.90	1.85	1.77	1.71	1.66	1.62	1.59
600	3.86	3.01	2.62	2.39	2.23	2.11	2.02	1.95	1.90	1.85	1.77	1.71	1.66	1.62	1.59
750	3.85	3.01	2.62	2.38	2.23	2.11	2.02	1.95	1.89	1.84	1.77	1.70	1.66	1.62	1.58
1000	3.85	3.00	2.61	2.38	2.22	2.11	2.02	1.95	1.89	1.84	1.76	1.70	1.65	1.61	1.58

TABLE A.4

 χ^2 (Chi-Squared) Distribution: Critical Values of χ^2

Degrees of freedom	Significance level		
	5%	1%	0.1%
1	3.841	6.635	10.828
2	5.991	9.210	13.816
3	7.815	11.345	16.266
4	9.488	13.277	18.467
5	11.070	15.086	20.515
6	12.592	16.812	22.458
7	14.067	18.475	24.322
8	15.507	20.090	26.124
9	16.919	21.666	27.877
10	18.307	23.209	29.588

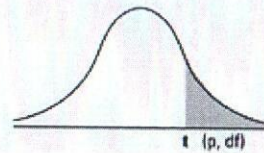
Man – Whitney U
(Two-Tailed Testing)

n ₂	α	n ₁																		
		3	4	5	6	7	8	9	10	11	12	13	14	15	16	17	18	19	20	
3	.05	--	0	0	1	1	2	2	3	3	4	4	5	5	6	6	7	7	8	
	.01	--	0	0	0	0	0	0	0	0	1	1	1	2	2	2	2	3	3	
4	.05	--	0	1	2	3	4	4	5	6	7	8	9	10	11	11	12	13	14	
	.01	--	--	0	0	0	1	1	2	2	3	3	4	5	5	6	6	7	8	
5	.05	0	1	2	3	5	6	7	8	9	11	12	13	14	15	17	18	19	20	
	.01	--	--	0	1	1	2	3	4	5	6	7	7	8	9	10	11	12	13	
6	.05	1	2	3	5	6	8	10	11	13	14	16	17	19	21	22	24	25	27	
	.01	--	0	1	2	3	4	5	6	7	9	10	11	12	13	15	16	17	18	
7	.05	1	3	5	6	8	10	12	14	16	18	20	22	24	26	28	30	32	34	
	.01	--	0	1	3	4	6	7	9	10	12	13	15	16	18	19	21	22	24	
8	.05	2	4	6	8	10	13	15	17	19	22	24	26	29	31	34	36	38	41	
	.01	--	1	2	4	6	7	9	11	13	15	17	18	20	22	24	26	28	30	
9	.05	2	4	7	10	12	15	17	20	23	26	28	31	34	37	39	42	45	48	
	.01	0	1	3	5	7	9	11	13	16	18	20	22	24	27	29	31	33	36	
10	.05	3	5	8	11	14	17	20	23	26	29	33	36	39	42	45	48	52	55	
	.01	0	2	4	6	9	11	13	16	18	21	24	26	29	31	34	37	39	42	
11	.05	3	6	9	13	16	19	23	26	30	33	37	40	44	47	51	55	58	62	
	.01	0	2	5	7	10	13	16	18	21	24	27	30	33	36	39	42	45	48	
12	.05	4	7	11	14	18	22	26	29	33	37	41	45	49	53	57	61	65	69	
	.01	1	3	6	9	12	15	18	21	24	27	31	34	37	41	44	47	51	54	
13	.05	4	8	12	16	20	24	28	33	37	41	45	50	54	59	63	67	72	76	
	.01	1	3	7	10	13	17	20	24	27	31	34	38	42	45	49	53	56	60	
14	.05	5	9	13	17	22	26	31	36	40	45	50	55	59	64	67	74	78	83	
	.01	1	4	7	11	15	18	22	26	30	34	38	42	46	50	54	58	63	67	
15	.05	5	10	14	19	24	29	34	39	44	49	54	59	64	70	75	80	85	90	
	.01	2	5	8	12	16	20	24	29	33	37	42	46	51	55	60	64	69	73	
16	.05	6	11	15	21	26	31	37	42	47	53	59	64	70	75	81	86	92	98	
	.01	2	5	9	13	18	22	27	31	36	41	45	50	55	60	65	70	74	79	
17	.05	6	11	17	22	28	34	39	45	51	57	63	67	75	81	87	93	99	105	
	.01	2	6	10	15	19	24	29	34	39	44	49	54	60	65	70	75	81	86	
18	.05	7	12	18	24	30	36	42	48	55	61	67	74	80	86	93	99	106	112	
	.01	2	6	11	16	21	26	31	37	42	47	53	58	64	70	75	81	87	92	
19	.05	7	13	19	25	32	38	45	52	58	65	72	78	85	92	99	106	113	119	
	.01	3	7	12	17	22	28	33	39	45	51	56	63	69	74	81	87	93	99	
20	.05	8	14	20	27	34	41	48	55	62	69	76	83	90	98	105	112	119	127	
	.01	3	8	13	18	24	30	36	42	48	54	60	67	73	79	86	92	99	105	

Man Whitney U
(One-Tailed Testing)

n ₂	α	n ₁																		
		3	4	5	6	7	8	9	10	11	12	13	14	15	16	17	18	19	20	
3	.05	0	0	1	2	2	3	4	4	5	5	6	7	7	8	9	9	10	11	
	.01	--	0	0	0	0	0	1	1	1	2	2	2	3	3	4	4	4	5	
4	.05	0	1	2	3	4	5	6	7	8	9	10	11	12	14	15	16	17	18	
	.01	--	--	0	1	1	2	3	3	4	5	5	6	7	7	8	9	9	10	
5	.05	1	2	4	5	6	8	9	11	12	13	15	16	18	19	20	22	23	25	
	.01	--	0	1	2	3	4	5	6	7	8	9	10	11	12	13	14	15	16	
6	.05	2	3	5	7	8	10	12	14	16	17	19	21	23	25	26	28	30	32	
	.01	--	1	2	3	4	6	7	8	9	11	12	13	15	16	18	19	20	22	
7	.05	2	4	6	8	11	13	15	17	19	21	24	26	28	30	33	35	37	39	
	.01	0	1	3	4	6	7	9	11	12	14	16	17	19	21	23	24	26	28	
8	.05	3	5	8	10	13	15	18	20	23	26	28	31	33	36	39	41	44	47	
	.01	0	2	4	6	7	9	11	13	15	17	20	22	24	26	28	30	32	34	
9	.05	4	6	9	12	15	18	21	24	27	30	33	36	39	42	45	48	51	54	
	.01	1	3	5	7	9	11	14	16	18	21	23	26	28	31	33	36	38	40	
10	.05	4	7	11	14	17	20	24	27	31	34	37	41	44	48	51	55	58	62	
	.01	1	3	6	8	11	13	16	19	22	24	27	30	33	36	38	41	44	47	
11	.05	5	8	12	16	19	23	27	31	34	38	42	46	50	54	57	61	65	69	
	.01	1	4	7	9	12	15	18	22	25	28	31	34	37	41	44	47	50	53	
12	.05	5	9	13	17	21	26	30	34	38	42	47	51	55	60	64	68	72	77	
	.01	2	5	8	11	14	17	21	24	28	31	35	38	42	46	49	53	56	60	
13	.05	6	10	15	19	24	28	33	37	42	47	51	56	61	65	70	75	80	84	
	.01	2	5	9	12	16	20	23	27	31	35	39	43	47	51	55	59	63	67	
14	.05	7	11	16	21	26	31	36	41	46	51	56	61	66	71	77	82	87	92	
	.01	2	6	10	13	17	22	26	30	34	38	43	47	51	56	60	65	69	73	
15	.05	7	12	18	23	28	33	39	44	50	55	61	66	72	77	83	88	94	100	
	.01	3	7	11	15	19	24	28	33	37	42	47	51	56	61	66	70	75	80	
16	.05	8	14	19	25	30	36	42	48	54	60	65	71	77	83	89	95	101	107	
	.01	3	7	12	16	21	26	31	36	41	46	51	56	61	66	71	76	82	87	
17	.05	9	15	20	26	33	39	45	51	57	64	70	77	83	89	96	102	109	115	
	.01	4	8	13	18	23	28	33	38	44	49	55	60	66	71	77	82	88	93	
18	.05	9	16	22	28	35	41	48	55	61	68	75	82	88	95	102	109	116	123	
	.01	4	9	14	19	24	30	36	41	47	53	59	65	70	76	82	88	94	100	
19	.05	10	17	23	30	37	44	51	58	65	72	80	87	94	101	109	116	123	130	
	.01	4	9	15	20	26	32	38	44	50	56	63	69	75	82	88	94	101	107	
20	.05	11	18	25	32	39	47	54	62	69	77	84	92	100	107	115	123	130	138	
	.01	5	10	16	22	28	34	40	47	53	60	67	73	80	87	93	100	107	114	

Numbers in each row of the table are values on a t -distribution with (df) degrees of freedom for selected right-tail (greater-than) probabilities (p).



df/p	0.40	0.25	0.10	0.05	0.025	0.01	0.005	0.0005
1	0.324920	1.000000	3.077684	6.313752	12.70620	31.82052	63.65674	636.6192
2	0.288675	0.816497	1.885618	2.919986	4.30265	6.96456	9.92484	31.5991
3	0.276671	0.764892	1.637744	2.353363	3.18245	4.54070	5.84091	12.9240
4	0.270722	0.740697	1.533206	2.131847	2.77645	3.74695	4.60409	8.6103
5	0.267181	0.726687	1.475884	2.015048	2.57058	3.36493	4.03214	6.8688
6	0.264835	0.717558	1.439756	1.943180	2.44691	3.14267	3.70743	5.9588
7	0.263167	0.711142	1.414924	1.894579	2.36462	2.99795	3.49948	5.4079
8	0.261921	0.706387	1.396815	1.859548	2.30600	2.89646	3.35539	5.0413
9	0.260955	0.702722	1.383029	1.833113	2.26216	2.82144	3.24984	4.7809
10	0.260185	0.699812	1.372184	1.812461	2.22814	2.76377	3.16927	4.5869
11	0.259556	0.697445	1.363430	1.795885	2.20099	2.71808	3.10581	4.4370
12	0.259033	0.695483	1.356217	1.782288	2.17881	2.68100	3.05454	4.3178
13	0.258591	0.693829	1.350171	1.770933	2.16037	2.65031	3.01228	4.2208
14	0.258213	0.692417	1.345030	1.761310	2.14479	2.62449	2.97684	4.1405
15	0.257885	0.691197	1.340606	1.753050	2.13145	2.60248	2.94671	4.0728
16	0.257599	0.690132	1.336757	1.745884	2.11991	2.58349	2.92078	4.0150
17	0.257347	0.689195	1.333379	1.739607	2.10982	2.56693	2.89823	3.9651
18	0.257123	0.688364	1.330391	1.734064	2.10092	2.55238	2.87844	3.9216
19	0.256923	0.687621	1.327728	1.729133	2.09302	2.53948	2.86093	3.8834
20	0.256743	0.686954	1.325341	1.724718	2.08596	2.52798	2.84534	3.8495
21	0.256580	0.686352	1.323188	1.720743	2.07961	2.51765	2.83136	3.8193
22	0.256432	0.685805	1.321237	1.717144	2.07387	2.50832	2.81876	3.7921
23	0.256297	0.685306	1.319460	1.713872	2.06866	2.49987	2.80734	3.7676
24	0.256173	0.684850	1.317836	1.710882	2.06390	2.49216	2.79694	3.7454
25	0.256060	0.684430	1.316345	1.708141	2.05954	2.48511	2.78744	3.7251
26	0.255955	0.684043	1.314972	1.705618	2.05553	2.47863	2.77871	3.7066
27	0.255858	0.683685	1.313703	1.703288	2.05183	2.47266	2.77068	3.6896
28	0.255768	0.683353	1.312527	1.701131	2.04841	2.46714	2.76326	3.6739
29	0.255684	0.683044	1.311434	1.699127	2.04523	2.46202	2.75639	3.6594
30	0.255605	0.682756	1.310415	1.697261	2.04227	2.45726	2.75000	3.6460
z	0.253347	0.674490	1.281552	1.644854	1.95996	2.32635	2.57583	3.2905
61			99%	95%	90%	80%	70%	50%