



FreeExams.co.ke

# **UNIVERSITY EXAMINATIONS 2022/2023 ACADEMIC YEAR**

## **THIRD YEAR SECOND SEMESTER**

### **MAIN EXAMINATION**

**FOR THE DEGREES OF BACHELOR OF SCIENCE IN BIOLOGY AND  
BACHELOR OF EDUCATION SCIENCE.**

**COURSE CODE: SBL 321.**  
**COURSE TITLE: BIostatISTICS**

**DATE: 17<sup>TH</sup> APRIL 2023**      **TIME: 2.00 – 4.00 PM**

---

---

#### **INSTRUCTIONS TO CANDIDATES**

Answer Question one (1) and any other two (2) Questions. Question one carries 30 marks, the other Questions carry 20 marks each.

TIME: 2 Hours

## QUESTION ONE

- a. Explain the following:
- The coefficient of variation is a better measure of variation than the standard deviation (2 Marks).
  - When computing variance values are divided by  $n-1$  and not just  $n$  (2 Marks).
  - The three non-probability sampling techniques (3 Marks).
- b. In a breeding firm, a geneticist can take any 6 of 8 complementary genes; any 5 of 6 duplicate genes; any 4 of 6 sex linked genes; and any 5 of 7 polymeric genes. How many possible combinations of genes are there to be chosen from? (3 Marks).
- c. Human resource officers (HR) were asked whether choice of career was a function of the training received. The responses were either yes or no based on gender as tabulated below. Test the  $H_0$  that gender has no effect on response. (5 Marks).

	YES	NO
MALE HR	40	28
FEMALE HR	50	18

- d. How much of the area is found between the z-scores of  $-1.74$  and  $+3.24$ ? (4 Marks).
- e. Attach 95% C.I (confidence interval) to the mean of the following 7,9,10,14,15 and 17. (4 Marks).
- f. In a study among Kibabii University students, nine non-resident hostels were considered and the following students were found in each hostel 12, 36, 7, 10, 11, 15, 9, 6, 50. Test whether the mean from each hostel differs from 20. (5 Marks).
- g. There are 12 cars in a garage of 20 drivers. In how many ways can the cars be assigned to the drivers in order? (2 Marks).

## QUESTION TWO

The following are means for bud and flowering results obtained when comparing the effect of four Florigen levels on the flowering of roses.

FL-1	FL-2	FL-3	FL-4
9	13	46	40
8	14	119	60
7	16	70	76
5	17	200	80
4	18	30	80

Compute the F-value and determine whether there is a significant difference among the treatments (20 Marks).

**QUESTION THREE**

The following scores were obtained from a study with regard to phenotypic characteristics among two landraces of *Bambara* nuts in Bungoma County

BAM 001	2	8	12	4	19	21	26
BAM 012	32	37	45	56	67	77	89

- a. Compute the correlation coefficient (10 Marks).
- b. Formulate the  $H_0$  and comment on the level of significance at  $P < 0.05$  (3 Marks).
- c. What are the conditions required before a correlation analysis to be undertaken on any data (3 Marks).
- d. Explain the common misuses of correlation and regression analyses (4 Marks).

**QUESTION FOUR**

- a. Write an essay on the procedure for testing a hypothesis (15 Marks).
- b. Given  $t_{18} = 30.6$  at  $P < 0.001$ , test the null hypothesis (5 Marks).

**QUESTION FIVE**

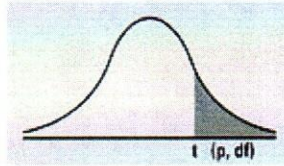
- a. Assuming the following are given values of the length (X) and yield (Y) of five melon plants. Using the deviation method, estimate and interpret the linear association between the length and yield of the melon plants. (10 Marks).

<b>Length X)</b>	3	4	6	5	2
<b>Yield (Y)</b>	10	12	15	13	5

- b. Distinguish between a randomized block design and a randomized completely design (10 Marks).



Numbers in each row of the table are values on a  $t$ -distribution with ( $df$ ) degrees of freedom for selected right-tail (greater-than) probabilities ( $p$ ).



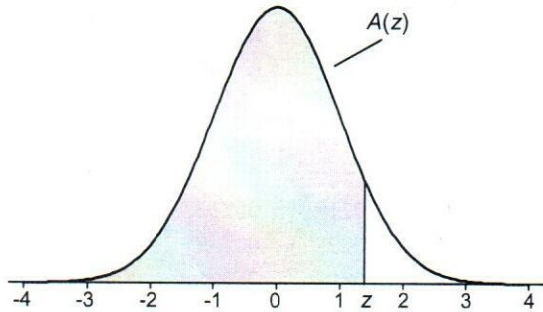
df/p	0.40	0.25	0.10	0.05	0.025	0.01	0.005	0.0005
1	0.324920	1.000000	3.077684	6.313752	12.70620	31.82052	63.65674	636.6192
2	0.288675	0.816497	1.885618	2.919986	4.30265	6.96456	9.92484	31.5991
3	0.276671	0.764892	1.637744	2.353363	3.18245	4.54070	5.84091	12.9240
4	0.270722	0.740697	1.533206	2.131847	2.77645	3.74695	4.60409	8.6103
5	0.267181	0.726687	1.475884	2.015048	2.57058	3.36493	4.03214	6.8688
6	0.264835	0.717558	1.439756	1.943180	2.44691	3.14267	3.70743	5.9588
7	0.263167	0.711142	1.414924	1.894579	2.36462	2.99795	3.49948	5.4079
8	0.261921	0.706387	1.396815	1.859548	2.30600	2.89646	3.35539	5.0413
9	0.260955	0.702722	1.383029	1.833113	2.26216	2.82144	3.24984	4.7809
10	0.260185	0.699812	1.372184	1.812461	2.22814	2.76377	3.16927	4.5869
11	0.259556	0.697445	1.363430	1.795885	2.20099	2.71808	3.10581	4.4370
12	0.259033	0.695483	1.356217	1.782288	2.17881	2.68100	3.05454	4.3178
13	0.258591	0.693829	1.350171	1.770933	2.16037	2.65031	3.01228	4.2208
14	0.258213	0.692417	1.345030	1.761310	2.14479	2.62449	2.97684	4.1405
15	0.257885	0.691197	1.340606	1.753050	2.13145	2.60248	2.94671	4.0728
16	0.257599	0.690132	1.336757	1.745884	2.11991	2.58349	2.92078	4.0150
17	0.257347	0.689195	1.333379	1.739607	2.10982	2.56693	2.89823	3.9651
18	0.257123	0.688364	1.330391	1.734064	2.10092	2.55238	2.87844	3.9216
19	0.256923	0.687621	1.327728	1.729133	2.09302	2.53948	2.86093	3.8834
20	0.256743	0.686954	1.325341	1.724718	2.08596	2.52798	2.84534	3.8495
21	0.256580	0.686352	1.323188	1.720743	2.07961	2.51765	2.83136	3.8193
22	0.256432	0.685805	1.321237	1.717144	2.07387	2.50832	2.81876	3.7921
23	0.256297	0.685306	1.319460	1.713872	2.06866	2.49987	2.80734	3.7676
24	0.256173	0.684850	1.317836	1.710882	2.06390	2.49216	2.79694	3.7454
25	0.256060	0.684430	1.316345	1.708141	2.05954	2.48511	2.78744	3.7251
26	0.255955	0.684043	1.314972	1.705618	2.05553	2.47863	2.77871	3.7066
27	0.255858	0.683685	1.313703	1.703288	2.05183	2.47266	2.77068	3.6896
28	0.255768	0.683353	1.312527	1.701131	2.04841	2.46714	2.76326	3.6739
29	0.255684	0.683044	1.311434	1.699127	2.04523	2.46202	2.75639	3.6594
30	0.255605	0.682756	1.310415	1.697261	2.04227	2.45726	2.75000	3.6460
z	0.253347	0.674490	1.281552	1.644854	1.95996	2.32635	2.57583	3.2905
CI	———	———	80%	90%	95%	98%	99%	99.9%



TABLE A.1

Cumulative Standardized Normal Distribution

$A(z)$  is the integral of the standardized normal distribution from  $-\infty$  to  $z$  (in other words, the area under the curve to the left of  $z$ ). It gives the probability of a normal random variable not being more than  $z$  standard deviations above its mean. Values of  $z$  of particular importance:



$z$	$A(z)$	
1.645	0.9500	Lower limit of right 5% tail
1.960	0.9750	Lower limit of right 2.5% tail
2.326	0.9900	Lower limit of right 1% tail
2.576	0.9950	Lower limit of right 0.5% tail
3.090	0.9990	Lower limit of right 0.1% tail
3.291	0.9995	Lower limit of right 0.05% tail

$z$	0.00	0.01	0.02	0.03	0.04	0.05	0.06	0.07	0.08	0.09
0.0	0.5000	0.5040	0.5080	0.5120	0.5160	0.5199	0.5239	0.5279	0.5319	0.5359
0.1	0.5398	0.5438	0.5478	0.5517	0.5557	0.5596	0.5636	0.5675	0.5714	0.5753
0.2	0.5793	0.5832	0.5871	0.5910	0.5948	0.5987	0.6026	0.6064	0.6103	0.6141
0.3	0.6179	0.6217	0.6255	0.6293	0.6331	0.6368	0.6406	0.6443	0.6480	0.6517
0.4	0.6554	0.6591	0.6628	0.6664	0.6700	0.6736	0.6772	0.6808	0.6844	0.6879
0.5	0.6915	0.6950	0.6985	0.7019	0.7054	0.7088	0.7123	0.7157	0.7190	0.7224
0.6	0.7257	0.7291	0.7324	0.7357	0.7389	0.7422	0.7454	0.7486	0.7517	0.7549
0.7	0.7580	0.7611	0.7642	0.7673	0.7704	0.7734	0.7764	0.7794	0.7823	0.7852
0.8	0.7881	0.7910	0.7939	0.7967	0.7995	0.8023	0.8051	0.8078	0.8106	0.8133
0.9	0.8159	0.8186	0.8212	0.8238	0.8264	0.8289	0.8315	0.8340	0.8365	0.8389
1.0	0.8413	0.8438	0.8461	0.8485	0.8508	0.8531	0.8554	0.8577	0.8599	0.8621
1.1	0.8643	0.8665	0.8686	0.8708	0.8729	0.8749	0.8770	0.8790	0.8810	0.8830
1.2	0.8849	0.8869	0.8888	0.8907	0.8925	0.8944	0.8962	0.8980	0.8997	0.9015
1.3	0.9032	0.9049	0.9066	0.9082	0.9099	0.9115	0.9131	0.9147	0.9162	0.9177
1.4	0.9192	0.9207	0.9222	0.9236	0.9251	0.9265	0.9279	0.9292	0.9306	0.9319
1.5	0.9332	0.9345	0.9357	0.9370	0.9382	0.9394	0.9406	0.9418	0.9429	0.9441
1.6	0.9452	0.9463	0.9474	0.9484	0.9495	0.9505	0.9515	0.9525	0.9535	0.9545
1.7	0.9554	0.9564	0.9573	0.9582	0.9591	0.9599	0.9608	0.9616	0.9625	0.9633
1.8	0.9641	0.9649	0.9656	0.9664	0.9671	0.9678	0.9686	0.9693	0.9699	0.9706
1.9	0.9713	0.9719	0.9726	0.9732	0.9738	0.9744	0.9750	0.9756	0.9761	0.9767
2.0	0.9772	0.9778	0.9783	0.9788	0.9793	0.9798	0.9803	0.9808	0.9812	0.9817
2.1	0.9821	0.9826	0.9830	0.9834	0.9838	0.9842	0.9846	0.9850	0.9854	0.9857
2.2	0.9861	0.9864	0.9868	0.9871	0.9875	0.9878	0.9881	0.9884	0.9887	0.9890
2.3	0.9893	0.9896	0.9898	0.9901	0.9904	0.9906	0.9909	0.9911	0.9913	0.9916
2.4	0.9918	0.9920	0.9922	0.9925	0.9927	0.9929	0.9931	0.9932	0.9934	0.9936
2.5	0.9938	0.9940	0.9941	0.9943	0.9945	0.9946	0.9948	0.9949	0.9951	0.9952
2.6	0.9953	0.9955	0.9956	0.9957	0.9959	0.9960	0.9961	0.9962	0.9963	0.9964
2.7	0.9965	0.9966	0.9967	0.9968	0.9969	0.9970	0.9971	0.9972	0.9973	0.9974
2.8	0.9974	0.9975	0.9976	0.9977	0.9977	0.9978	0.9979	0.9979	0.9980	0.9981
2.9	0.9981	0.9982	0.9982	0.9983	0.9984	0.9984	0.9985	0.9985	0.9986	0.9986
3.0	0.9987	0.9987	0.9987	0.9988	0.9988	0.9989	0.9989	0.9989	0.9990	0.9990
3.1	0.9990	0.9991	0.9991	0.9991	0.9992	0.9992	0.9992	0.9992	0.9993	0.9993
3.2	0.9993	0.9993	0.9994	0.9994	0.9994	0.9994	0.9994	0.9995	0.9995	0.9995
3.3	0.9995	0.9995	0.9995	0.9996	0.9996	0.9996	0.9996	0.9996	0.9996	0.9997
3.4	0.9997	0.9997	0.9997	0.9997	0.9997	0.9997	0.9997	0.9997	0.9997	0.9998
3.5	0.9998	0.9998	0.9998	0.9998	0.9998	0.9998	0.9998	0.9998	0.9998	0.9998
3.6	0.9998	0.9998	0.9999							



Z	.00	.01	.02	.03	.04	.05	.06	.07	.08	.09
-3.9	.00005	.00005	.00004	.00004	.00004	.00004	.00004	.00004	.00003	.00003
-3.8	.00007	.00007	.00007	.00006	.00006	.00006	.00006	.00005	.00005	.00005
-3.7	.00011	.00010	.00010	.00010	.00009	.00009	.00008	.00008	.00008	.00008
-3.6	.00016	.00015	.00015	.00014	.00014	.00013	.00013	.00012	.00012	.00011
-3.5	.00023	.00022	.00022	.00021	.00020	.00019	.00019	.00018	.00017	.00017
-3.4	.00034	.00032	.00031	.00030	.00029	.00028	.00027	.00026	.00025	.00024
-3.3	.00048	.00047	.00045	.00043	.00042	.00040	.00039	.00038	.00036	.00035
-3.2	.00069	.00066	.00064	.00062	.00060	.00058	.00056	.00054	.00052	.00050
-3.1	.00097	.00094	.00090	.00087	.00084	.00082	.00079	.00076	.00074	.00071
-3.0	.00135	.00131	.00126	.00122	.00118	.00114	.00111	.00107	.00104	.00100
-2.9	.00187	.00181	.00175	.00169	.00164	.00159	.00154	.00149	.00144	.00139
-2.8	.00256	.00248	.00240	.00233	.00226	.00219	.00212	.00205	.00199	.00193
-2.7	.00347	.00336	.00326	.00317	.00307	.00298	.00289	.00280	.00272	.00264
-2.6	.00466	.00453	.00440	.00427	.00415	.00402	.00391	.00379	.00368	.00357
-2.5	.00621	.00604	.00587	.00570	.00554	.00539	.00523	.00508	.00494	.00480
-2.4	.00820	.00798	.00776	.00755	.00734	.00714	.00695	.00676	.00657	.00639
-2.3	.01072	.01044	.01017	.00990	.00964	.00939	.00914	.00889	.00866	.00842
-2.2	.01390	.01355	.01321	.01287	.01255	.01222	.01191	.01160	.01130	.01101
-2.1	.01786	.01743	.01700	.01659	.01618	.01578	.01539	.01500	.01463	.01426
-2.0	.02275	.02222	.02169	.02118	.02068	.02018	.01970	.01923	.01876	.01831
-1.9	.02872	.02807	.02743	.02680	.02619	.02559	.02500	.02442	.02385	.02330
-1.8	.03593	.03515	.03438	.03362	.03288	.03216	.03144	.03074	.03005	.02938
-1.7	.04457	.04363	.04272	.04182	.04093	.04006	.03920	.03836	.03754	.03673
-1.6	.05480	.05370	.05262	.05155	.05050	.04947	.04846	.04746	.04648	.04551
-1.5	.06681	.06552	.06426	.06301	.06178	.06057	.05938	.05821	.05705	.05592
-1.4	.08076	.07927	.07780	.07636	.07493	.07353	.07215	.07078	.06944	.06811
-1.3	.09680	.09510	.09342	.09176	.09012	.08851	.08691	.08534	.08379	.08226
-1.2	.11507	.11314	.11123	.10935	.10749	.10565	.10383	.10204	.10027	.09853
-1.1	.13567	.13350	.13136	.12924	.12714	.12507	.12302	.12100	.11900	.11702
-1.0	.15866	.15625	.15386	.15151	.14917	.14686	.14457	.14231	.14007	.13786
-0.9	.18406	.18141	.17879	.17619	.17361	.17106	.16853	.16602	.16354	.16109
-0.8	.21186	.20897	.20611	.20327	.20045	.19766	.19489	.19215	.18943	.18673
-0.7	.24196	.23885	.23576	.23270	.22965	.22663	.22363	.22065	.21770	.21476
-0.6	.27425	.27093	.26763	.26435	.26109	.25785	.25463	.25143	.24825	.24510
-0.5	.30854	.30503	.30153	.29806	.29460	.29116	.28774	.28434	.28096	.27760
-0.4	.34458	.34090	.33724	.33360	.32997	.32636	.32276	.31918	.31561	.31207
-0.3	.38209	.37828	.37448	.37070	.36693	.36317	.35942	.35569	.35197	.34827
-0.2	.42074	.41683	.41294	.40905	.40517	.40129	.39743	.39358	.38974	.38591
-0.1	.46017	.45620	.45224	.44828	.44433	.44038	.43644	.43251	.42858	.42465
-0.0	.50000	.49601	.49202	.48803	.48405	.48006	.47608	.47210	.46812	.46414

TABLE A.2

t Distribution: Critical Values of t

Degrees of freedom	Two-tailed test: One-tailed test:	Significance level					
		10% 5%	5% 2.5%	2% 1%	1% 0.5%	0.2% 0.1%	0.1% 0.05%
1		6.314	12.706	31.821	63.657	318.309	636.619
2		2.920	4.303	6.965	9.925	22.327	31.599
3		2.353	3.182	4.541	5.841	10.215	12.924
4		2.132	2.776	3.747	4.604	7.173	8.610
5		2.015	2.571	3.365	4.032	5.893	6.869
6		1.943	2.447	3.143	3.707	5.208	5.959
7		1.894	2.365	2.998	3.499	4.785	5.408
8		1.860	2.306	2.896	3.355	4.501	5.041
9		1.833	2.262	2.821	3.250	4.297	4.781
10		1.812	2.228	2.764	3.169	4.144	4.587
11		1.796	2.201	2.718	3.106	4.025	4.437
12		1.782	2.179	2.681	3.055	3.930	4.318
13		1.771	2.160	2.650	3.012	3.852	4.221
14		1.761	2.145	2.624	2.977	3.787	4.140
15		1.753	2.131	2.602	2.947	3.733	4.073
16		1.746	2.120	2.583	2.921	3.686	4.015
17		1.740	2.110	2.567	2.898	3.646	3.965
18		1.734	2.101	2.552	2.878	3.610	3.922
19		1.729	2.093	2.539	2.861	3.579	3.883
20		1.725	2.086	2.528	2.845	3.552	3.850
21		1.721	2.080	2.518	2.831	3.527	3.819
22		1.717	2.074	2.508	2.819	3.505	3.792
23		1.714	2.069	2.500	2.807	3.485	3.768
24		1.711	2.064	2.492	2.797	3.467	3.745
25		1.708	2.060	2.485	2.787	3.450	3.725
26		1.706	2.056	2.479	2.779	3.435	3.707
27		1.703	2.052	2.473	2.771	3.421	3.690
28		1.701	2.048	2.467	2.763	3.408	3.674
29		1.699	2.045	2.462	2.756	3.396	3.659
30		1.697	2.042	2.457	2.750	3.385	3.646
32		1.694	2.037	2.449	2.738	3.365	3.622
34		1.691	2.032	2.441	2.728	3.348	3.601
36		1.688	2.028	2.434	2.719	3.333	3.582
38		1.686	2.024	2.429	2.712	3.319	3.566
40		1.684	2.021	2.423	2.704	3.307	3.551
42		1.682	2.018	2.418	2.698	3.296	3.538
44		1.680	2.015	2.414	2.692	3.286	3.526
46		1.679	2.013	2.410	2.687	3.277	3.515
48		1.677	2.011	2.407	2.682	3.269	3.505
50		1.676	2.009	2.403	2.678	3.261	3.496
60		1.671	2.000	2.390	2.660	3.232	3.460
70		1.667	1.994	2.381	2.648	3.211	3.435
80		1.664	1.990	2.374	2.639	3.195	3.416
90		1.662	1.987	2.368	2.632	3.183	3.402
100		1.660	1.984	2.364	2.626	3.174	3.390
120		1.658	1.980	2.358	2.617	3.160	3.373
150		1.655	1.976	2.351	2.609	3.145	3.357
200		1.653	1.972	2.345	2.601	3.131	3.340
300		1.650	1.968	2.339	2.592	3.118	3.323
400		1.649	1.966	2.336	2.588	3.111	3.315
500		1.648	1.965	2.334	2.586	3.107	3.310
600		1.647	1.964	2.333	2.584	3.104	3.307
∞		1.645	1.960	2.326	2.576	3.090	3.291



TABLE A.3

F Distribution: Critical Values of F (5% significance level)

$v_1$	1	2	3	4	5	6	7	8	9	10	12	14	16	18	20
1	161.45	199.50	215.71	224.58	230.16	233.99	236.77	238.88	240.54	241.88	243.91	245.36	246.46	247.32	248.01
2	18.51	19.00	19.16	19.25	19.30	19.33	19.35	19.37	19.38	19.40	19.41	19.42	19.43	19.44	19.45
3	10.13	9.55	9.28	9.12	9.01	8.94	8.89	8.85	8.81	8.79	8.74	8.71	8.69	8.67	8.66
4	7.71	6.94	6.59	6.39	6.26	6.16	6.09	6.04	6.00	5.96	5.91	5.87	5.84	5.82	5.80
5	6.61	5.79	5.41	5.19	5.05	4.95	4.88	4.82	4.77	4.74	4.68	4.64	4.60	4.58	4.56
6	5.99	5.14	4.76	4.53	4.39	4.28	4.21	4.15	4.10	4.06	4.00	3.96	3.92	3.90	3.87
7	5.59	4.74	4.35	4.12	3.97	3.87	3.79	3.73	3.68	3.64	3.57	3.53	3.49	3.47	3.44
8	5.32	4.46	4.07	3.84	3.69	3.58	3.50	3.44	3.39	3.35	3.28	3.24	3.20	3.17	3.15
9	5.12	4.26	3.86	3.63	3.48	3.37	3.29	3.23	3.18	3.14	3.07	3.03	2.99	2.96	2.94
10	4.96	4.10	3.71	3.48	3.33	3.22	3.14	3.07	3.02	2.98	2.91	2.86	2.83	2.80	2.77
11	4.84	3.98	3.59	3.36	3.20	3.09	3.01	2.95	2.90	2.85	2.79	2.74	2.70	2.67	2.65
12	4.75	3.89	3.49	3.26	3.11	3.00	2.91	2.85	2.80	2.75	2.69	2.64	2.60	2.57	2.54
13	4.67	3.81	3.41	3.18	3.03	2.92	2.83	2.77	2.71	2.67	2.60	2.55	2.51	2.48	2.46
14	4.60	3.74	3.34	3.11	2.96	2.85	2.76	2.70	2.65	2.60	2.53	2.48	2.44	2.41	2.39
15	4.54	3.68	3.29	3.06	2.90	2.79	2.71	2.64	2.59	2.54	2.48	2.42	2.38	2.35	2.33
16	4.49	3.63	3.24	3.01	2.85	2.74	2.66	2.59	2.54	2.49	2.42	2.37	2.33	2.30	2.28
17	4.45	3.59	3.20	2.96	2.81	2.70	2.61	2.55	2.49	2.45	2.38	2.33	2.29	2.26	2.23
18	4.41	3.55	3.16	2.93	2.77	2.66	2.58	2.51	2.46	2.41	2.34	2.29	2.25	2.22	2.19
19	4.38	3.52	3.13	2.90	2.74	2.63	2.54	2.48	2.42	2.38	2.31	2.26	2.21	2.18	2.16
20	4.35	3.49	3.10	2.87	2.71	2.60	2.51	2.45	2.39	2.35	2.28	2.22	2.18	2.15	2.12
21	4.32	3.47	3.07	2.84	2.68	2.57	2.49	2.42	2.37	2.32	2.25	2.20	2.16	2.12	2.10
22	4.30	3.44	3.05	2.82	2.66	2.55	2.46	2.40	2.34	2.30	2.23	2.17	2.13	2.10	2.07
23	4.28	3.42	3.03	2.80	2.64	2.53	2.44	2.37	2.32	2.27	2.20	2.15	2.11	2.08	2.05
24	4.26	3.40	3.01	2.78	2.62	2.51	2.42	2.36	2.30	2.25	2.18	2.13	2.09	2.05	2.03
25	4.24	3.39	2.99	2.76	2.60	2.49	2.40	2.34	2.28	2.24	2.16	2.11	2.07	2.04	2.01
26	4.22	3.37	2.98	2.74	2.59	2.47	2.39	2.32	2.27	2.22	2.15	2.09	2.05	2.02	1.99
27	4.21	3.35	2.96	2.73	2.57	2.46	2.37	2.31	2.25	2.20	2.13	2.08	2.04	2.00	1.97
28	4.20	3.34	2.95	2.71	2.56	2.45	2.36	2.29	2.24	2.19	2.12	2.06	2.02	1.99	1.96
29	4.18	3.33	2.93	2.70	2.55	2.43	2.35	2.28	2.22	2.18	2.10	2.05	2.01	1.97	1.94
30	4.17	3.32	2.92	2.69	2.53	2.42	2.33	2.27	2.21	2.16	2.09	2.04	1.99	1.96	1.93
35	4.12	3.27	2.87	2.64	2.49	2.37	2.29	2.22	2.16	2.11	2.04	1.99	1.94	1.91	1.88
40	4.08	3.23	2.84	2.61	2.45	2.34	2.25	2.18	2.12	2.08	2.00	1.95	1.90	1.87	1.84
50	4.03	3.18	2.79	2.56	2.40	2.29	2.20	2.13	2.07	2.03	1.95	1.89	1.85	1.81	1.78
60	4.00	3.15	2.76	2.53	2.37	2.25	2.17	2.10	2.04	1.99	1.92	1.86	1.82	1.78	1.75
70	3.98	3.13	2.74	2.50	2.35	2.23	2.14	2.07	2.02	1.97	1.89	1.84	1.79	1.75	1.72
80	3.96	3.11	2.72	2.49	2.33	2.21	2.13	2.06	2.00	1.95	1.88	1.82	1.77	1.73	1.70
90	3.95	3.10	2.71	2.47	2.32	2.20	2.11	2.04	1.99	1.94	1.86	1.80	1.76	1.72	1.69
100	3.94	3.09	2.70	2.46	2.31	2.19	2.10	2.03	1.97	1.93	1.85	1.79	1.75	1.71	1.68
120	3.92	3.07	2.68	2.45	2.29	2.18	2.09	2.02	1.96	1.91	1.83	1.78	1.73	1.69	1.66
150	3.90	3.06	2.66	2.43	2.27	2.16	2.07	2.00	1.94	1.89	1.82	1.76	1.71	1.67	1.64
200	3.89	3.04	2.65	2.42	2.26	2.14	2.06	1.98	1.93	1.88	1.80	1.74	1.69	1.66	1.62
250	3.88	3.03	2.64	2.41	2.25	2.13	2.05	1.98	1.92	1.87	1.79	1.73	1.68	1.65	1.61
300	3.87	3.03	2.63	2.40	2.24	2.13	2.04	1.97	1.91	1.86	1.78	1.72	1.68	1.64	1.61
400	3.86	3.02	2.63	2.39	2.24	2.12	2.03	1.96	1.90	1.85	1.78	1.72	1.67	1.63	1.60
500	3.86	3.01	2.62	2.39	2.23	2.12	2.03	1.96	1.90	1.85	1.77	1.71	1.66	1.62	1.59
600	3.86	3.01	2.62	2.39	2.23	2.11	2.02	1.95	1.90	1.85	1.77	1.71	1.66	1.62	1.59
750	3.85	3.01	2.62	2.38	2.23	2.11	2.02	1.95	1.89	1.84	1.77	1.70	1.66	1.62	1.58
1000	3.85	3.00	2.61	2.38	2.22	2.11	2.02	1.95	1.89	1.84	1.76	1.70	1.65	1.61	1.58



TABLE A.4

 $\chi^2$  (Chi-Squared) Distribution: Critical Values of  $\chi^2$ 

<i>Degrees of freedom</i>	<i>Significance level</i>		
	5%	1%	0.1%
1	3.841	6.635	10.828
2	5.991	9.210	13.816
3	7.815	11.345	16.266
4	9.488	13.277	18.467
5	11.070	15.086	20.515
6	12.592	16.812	22.458
7	14.067	18.475	24.322
8	15.507	20.090	26.124
9	16.919	21.666	27.877
10	18.307	23.209	29.588

Man – Whitney U  
(Two-Tailed Testing)

n <sub>2</sub>	α	n <sub>1</sub>																		
		3	4	5	6	7	8	9	10	11	12	13	14	15	16	17	18	19	20	
3	.05	--	0	0	1	1	2	2	3	3	4	4	5	5	6	6	7	7	8	
	.01	--	0	0	0	0	0	0	0	0	1	1	1	2	2	2	2	3	3	
4	.05	--	0	1	2	3	4	4	5	6	7	8	9	10	11	11	12	13	14	
	.01	--	--	0	0	0	1	1	2	2	3	3	4	5	5	6	6	7	8	
5	.05	0	1	2	3	5	6	7	8	9	11	12	13	14	15	17	18	19	20	
	.01	--	--	0	1	1	2	3	4	5	6	7	7	8	9	10	11	12	13	
6	.05	1	2	3	5	6	8	10	11	13	14	16	17	19	21	22	24	25	27	
	.01	--	0	1	2	3	4	5	6	7	9	10	11	12	13	15	16	17	18	
7	.05	1	3	5	6	8	10	12	14	16	18	20	22	24	26	28	30	32	34	
	.01	--	0	1	3	4	6	7	9	10	12	13	15	16	18	19	21	22	24	
8	.05	2	4	6	8	10	13	15	17	19	22	24	26	29	31	34	36	38	41	
	.01	--	1	2	4	6	7	9	11	13	15	17	18	20	22	24	26	28	30	
9	.05	2	4	7	10	12	15	17	20	23	26	28	31	34	37	39	42	45	48	
	.01	0	1	3	5	7	9	11	13	16	18	20	22	24	27	29	31	33	36	
10	.05	3	5	8	11	14	17	20	23	26	29	33	36	39	42	45	48	52	55	
	.01	0	2	4	6	9	11	13	16	18	21	24	26	29	31	34	37	39	42	
11	.05	3	6	9	13	16	19	23	26	30	33	37	40	44	47	51	55	58	62	
	.01	0	2	5	7	10	13	16	18	21	24	27	30	33	36	39	42	45	48	
12	.05	4	7	11	14	18	22	26	29	33	37	41	45	49	53	57	61	65	69	
	.01	1	3	6	9	12	15	18	21	24	27	31	34	37	41	44	47	51	54	
13	.05	4	8	12	16	20	24	28	33	37	41	45	50	54	59	63	67	72	76	
	.01	1	3	7	10	13	17	20	24	27	31	34	38	42	45	49	53	56	60	
14	.05	5	9	13	17	22	26	31	36	40	45	50	55	59	64	67	74	78	83	
	.01	1	4	7	11	15	18	22	26	30	34	38	42	46	50	54	58	63	67	
15	.05	5	10	14	19	24	29	34	39	44	49	54	59	64	70	75	80	85	90	
	.01	2	5	8	12	16	20	24	29	33	37	42	46	51	55	60	64	69	73	
16	.05	6	11	15	21	26	31	37	42	47	53	59	64	70	75	81	86	92	98	
	.01	2	5	9	13	18	22	27	31	36	41	45	50	55	60	65	70	74	79	
17	.05	6	11	17	22	28	34	39	45	51	57	63	67	75	81	87	93	99	105	
	.01	2	6	10	15	19	24	29	34	39	44	49	54	60	65	70	75	81	86	
18	.05	7	12	18	24	30	36	42	48	55	61	67	74	80	86	93	99	106	112	
	.01	2	6	11	16	21	26	31	37	42	47	53	58	64	70	75	81	87	92	
19	.05	7	13	19	25	32	38	45	52	58	65	72	78	85	92	99	106	113	119	
	.01	3	7	12	17	22	28	33	39	45	51	56	63	69	74	81	87	93	99	
20	.05	8	14	20	27	34	41	48	55	62	69	76	83	90	98	105	112	119	127	
	.01	3	8	13	18	24	30	36	42	48	54	60	67	73	79	86	92	99	105	



Man Whitney U  
(One-Tailed Testing)

n <sub>2</sub>	α	n <sub>1</sub>																		
		3	4	5	6	7	8	9	10	11	12	13	14	15	16	17	18	19	20	
3	.05	0	0	1	2	2	3	4	4	5	5	6	7	7	8	9	9	10	11	
	.01	--	0	0	0	0	0	1	1	1	2	2	2	3	3	4	4	4	5	
4	.05	0	1	2	3	4	5	6	7	8	9	10	11	12	14	15	16	17	18	
	.01	--	--	0	1	1	2	3	3	4	5	5	6	7	7	8	9	9	10	
5	.05	1	2	4	5	6	8	9	11	12	13	15	16	18	19	20	22	23	25	
	.01	--	0	1	2	3	4	5	6	7	8	9	10	11	12	13	14	15	16	
6	.05	2	3	5	7	8	10	12	14	16	17	19	21	23	25	26	28	30	32	
	.01	--	1	2	3	4	6	7	8	9	11	12	13	15	16	18	19	20	22	
7	.05	2	4	6	8	11	13	15	17	19	21	24	26	28	30	33	35	37	39	
	.01	0	1	3	4	6	7	9	11	12	14	16	17	19	21	23	24	26	28	
8	.05	3	5	8	10	13	15	18	20	23	26	28	31	33	36	39	41	44	47	
	.01	0	2	4	6	7	9	11	13	15	17	20	22	24	26	28	30	32	34	
9	.05	4	6	9	12	15	18	21	24	27	30	33	36	39	42	45	48	51	54	
	.01	1	3	5	7	9	11	14	16	18	21	23	26	28	31	33	36	38	40	
10	.05	4	7	11	14	17	20	24	27	31	34	37	41	44	48	51	55	58	62	
	.01	1	3	6	8	11	13	16	19	22	24	27	30	33	36	38	41	44	47	
11	.05	5	8	12	16	19	23	27	31	34	38	42	46	50	54	57	61	65	69	
	.01	1	4	7	9	12	15	18	22	25	28	31	34	37	41	44	47	50	53	
12	.05	5	9	13	17	21	26	30	34	38	42	47	51	55	60	64	68	72	77	
	.01	2	5	8	11	14	17	21	24	28	31	35	38	42	46	49	53	56	60	
13	.05	6	10	15	19	24	28	33	37	42	47	51	56	61	65	70	75	80	84	
	.01	2	5	9	12	16	20	23	27	31	35	39	43	47	51	55	59	63	67	
14	.05	7	11	16	21	26	31	36	41	46	51	56	61	66	71	77	82	87	92	
	.01	2	6	10	13	17	22	26	30	34	38	43	47	51	56	60	65	69	73	
15	.05	7	12	18	23	28	33	39	44	50	55	61	66	72	77	83	88	94	100	
	.01	3	7	11	15	19	24	28	33	37	42	47	51	56	61	66	70	75	80	
16	.05	8	14	19	25	30	36	42	48	54	60	65	71	77	83	89	95	101	107	
	.01	3	7	12	16	21	26	31	36	41	46	51	56	61	66	71	76	82	87	
17	.05	9	15	20	26	33	39	45	51	57	64	70	77	83	89	96	102	109	115	
	.01	4	8	13	18	23	28	33	38	44	49	55	60	66	71	77	82	88	93	
18	.05	9	16	22	28	35	41	48	55	61	68	75	82	88	95	102	109	116	123	
	.01	4	9	14	19	24	30	36	41	47	53	59	65	70	76	82	88	94	100	
19	.05	10	17	23	30	37	44	51	58	65	72	80	87	94	101	109	116	123	130	
	.01	4	9	15	20	26	32	38	44	50	56	63	69	75	82	88	94	101	107	
20	.05	11	18	25	32	39	47	54	62	69	77	84	92	100	107	115	123	130	138	
	.01	5	10	16	22	28	34	40	47	53	60	67	73	80	87	93	100	107	114	